

9660BY

Pilot operated Ductile Iron Pressure Reducing Valve with Low Flow By-Pass



Via Circonvallazione, 10
13018 Valduggia (VC), Italy
Tel: +39 0163 47891
Fax: +39 0163 47895
www.vironline.com



Ductile Iron pressure reducing valve

Flange dimension according to EN1092-2 / ANSI / AS2129

Flanged PN16

A low flow reducing valve is piped in parallel of the main valve side ports

Downstream setting pressure to a pre-determined limit

Operation with pilot valve to stabilize the pressure

independent of the flow rate

WRAS epoxy powder coating

Face to Face length according to EN558-1

Free of CE marking (cat. according to Art. 4.3 Dir. 2014/68/EU)

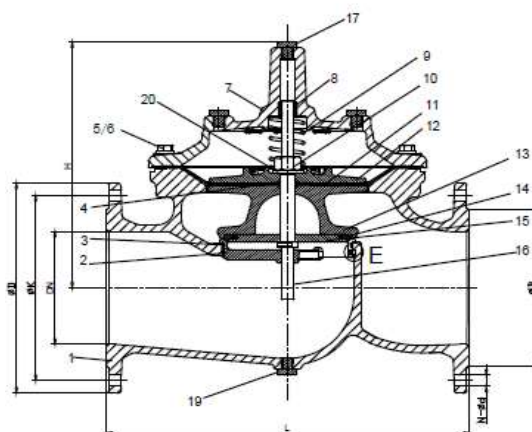
Working conditions:

- Suitable for: water, 0°C to +80°C
- Not suitable for: gases group 1 & 2, liquids group 1 (Dir. 2014/68/EU)



PARTLIST

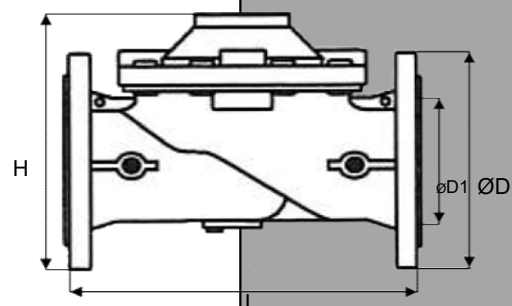
N.	Part	Material	Norm
1	Body	Ductile iron	GGG50
2	Seat	Stainless steel	304
3	O-Ring	EPDM	WRAS APPROVED
4	O-Ring	EPDM	WRAS APPROVED
5	Bolt	Stainless steel	304
6	Washer	Stainless steel	A2
7	Bonnet	Ductile iron	GGG50
8	Bush	Bronze	C61900
9	Spring	Stainless steel	304
10	Caulking Nut	Stainless steel	304
11	Diaphragm	EPDM	WRAS APPROVED
12	Fixing holder	Ductile iron	GGG50
13	Disc Holder	Ductile iron	GGG50
14	Seal	EPDM	
15	Seat Retainer	Stainless steel	X20Cr13
16	Stem	Stainless steel	304
17	Plug	Stainless steel	304
18	Screw	Stainless steel	304
19	Plug	Stainless steel	304
20	Washer	Stainless steel	304



DIMENSIONS

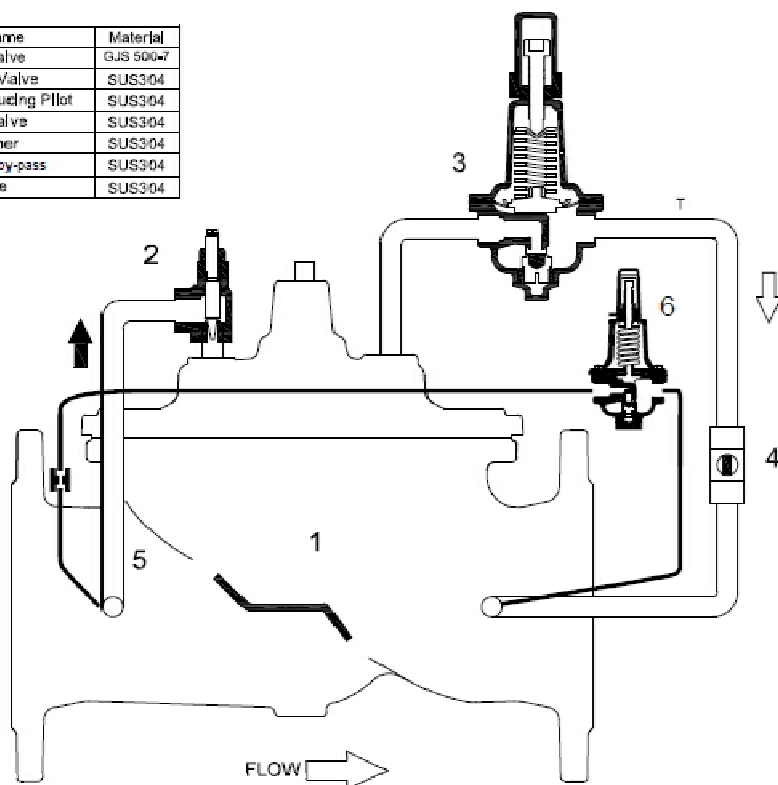
DN	ØD1 [mm]	ØD [mm]	H [mm]	L [mm]	Weight [kg]
50	125	165	240	230	13,05
65	145	185	285	290	18,3
80	160	200	310	310	23,65
100	180	220	345	350	31,55
125	210	250	350	400	42
150	240	285	480	480	74
200	295	340	600	600	140
250	355	405	700	730	237
300	410	460	780	850	330
350	470	520	810	980	380

*Suggested flow rate with $\Delta p=0,2\text{bar}$, max flow rate is about double the indicated value.

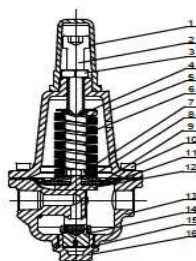
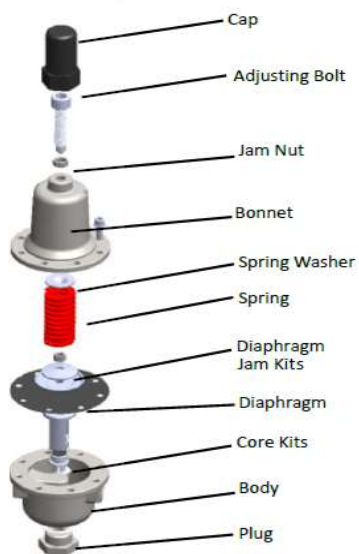


09/07/2024

NO.	Part Name	Material
1	Main Valve	GS 5007
2	Needle Valve	SUS304
3	Pressure reducing Pilot	SUS304
4	Ball Valve	SUS304
5	Strainer	SUS304
6	Low flow by-pass	SUS304
T	Tube	SUS304



Reducing Pilot



No.	Parts name	Material
1	Cap	ABS
2	Adjusting screw	Stainless steel
3	Jam nut	Stainless steel
4	Spring guide	Stainless steel
5	Bonnet	Stainless steel
6	Spring	Cr-VA
7	Nut	A2
8	Washer	A2
9	Fixing Holder	Stainless steel
10	Screw	A2
11	Diaphragm	NBR+Nylon
12	Yoke	Stainless steel
13	Body	Stainless steel
14	Disc	SUS304+NBR
15	Gasket	PTFE
16	Plug	Stainless steel



Via Circonvallazione, 10
13018 Valduggia (VC), Italy
Tel: +39 0163 47891
Fax: +39 0163 47895
www.vironline.com

Main Valve

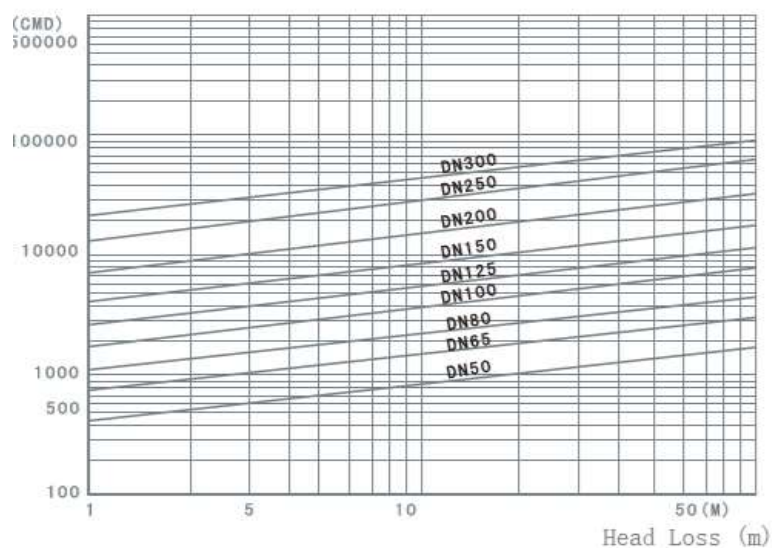
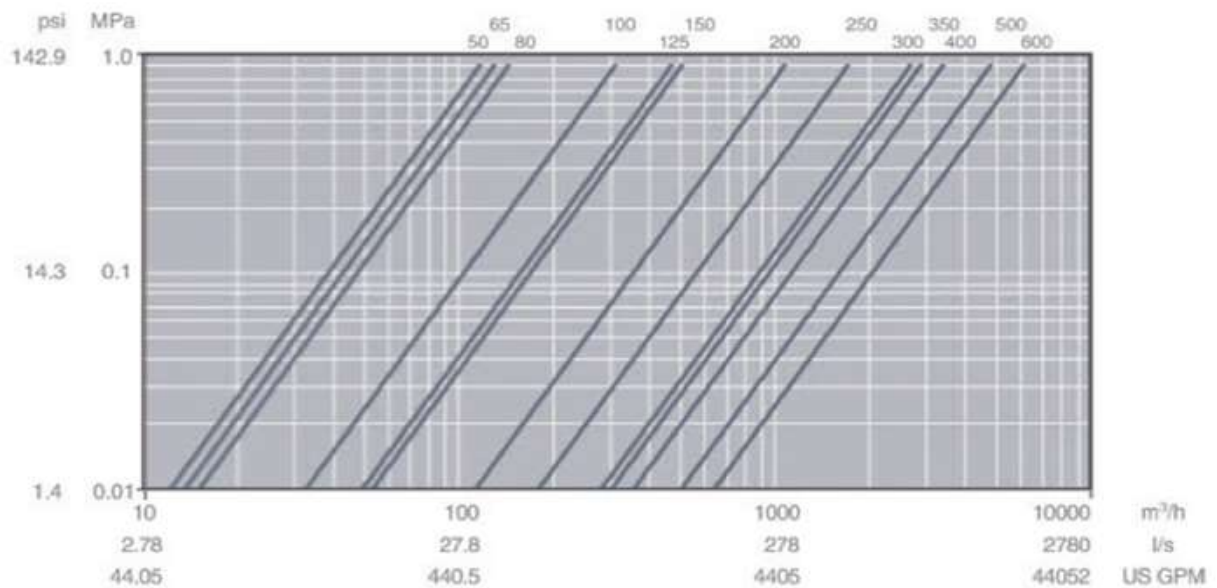


Via Circonvallazione, 10
13018 Valduggia (VC), Italy
Tel: +39 0163 47891
Fax: +39 0163 47895
www.vironline.com

VALVE SIZING



Head Loss Curve



- Test condition: Valve fully open.



Via Circonvallazione, 10
13018 Valduggia (VC), Italy
Tel: +39 0163 47891
Fax: +39 0163 47895
www.vironline.com