

1L805 and 1L806

Brass angle valve



Via Circonvallazione, 10
13018 Valduggia (VC), Italy
Tel: +39 0163 47891
Fax: +39 0163 47895
www.vironline.com



Brass angle valve

Threaded M (ISO 228/1) with covering plate on wall side

Available in the following versions:

- Fig. 1L805, with M (ISO 228/1) connection on sink side (1/2"x1/2")
 - Fig. 1L806, with olive and nut (O/N) connection on sink side (Ø10x1/2")
- WRAS compliant

PN10

Free of CE marking (cat. according to Art. 4.3 Dir. 2014/68/EU)

Working conditions

- Suitable for: water, 0°C to +95°C
- Not suitable for: gases group 1 & 2, liquids group 1 (Dir. 2014/68/EU)

PARTLIST

N.	Part	Material	Norm
1	Plate	Stainless steel	AISI 304
2	Body	Chromium pl. Brass	CW617N
3	Washer	NBR	-
4	O-ring	NBR	-
5	Stem	Brass	CW617N
6	Stop ring	Stainless steel	-
7	Knob	ABS	-
8	Sleeve	Polyamide	-
9	Gasket	NBR	-
10	Olive	Brass	CW617N
11	Nut	Chromium pl. Brass	CW617N

DIMENSIONS

DN	T	A	HA	HB	LA	LB	P	Weight ¹
		[mm]	[mm]	[mm]	[mm]	[mm]	[mm]	[g]
015	1/2"	52	50,0	95	23	39,5	10	102/112,5

¹Fig. 1L805 / Fig. 1L806

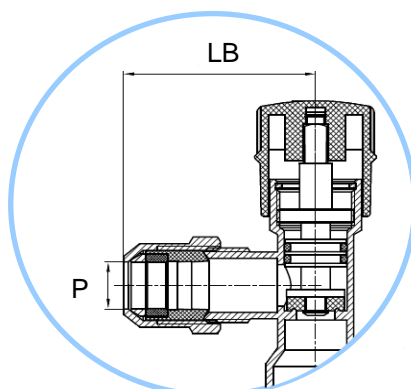


Fig. 1L806 O/N

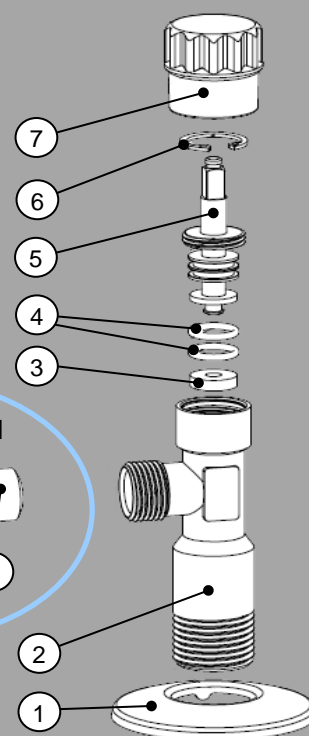
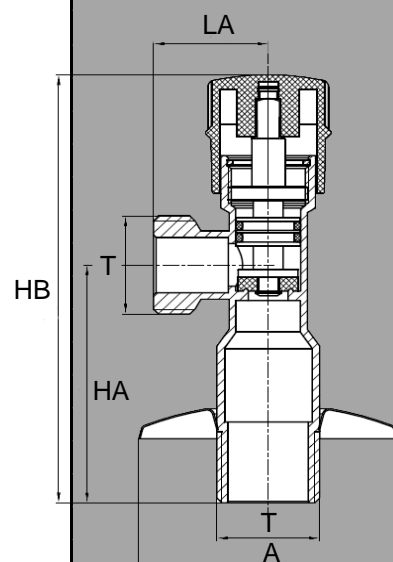
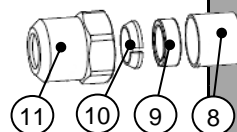


Fig. 1L806 O/N



230726